

VM150/300 WiFi Module

Quick Setting Guide

Declaration

Copyright © 2012 Shenzhen HouTian Network Communication Technology Co., Ltd

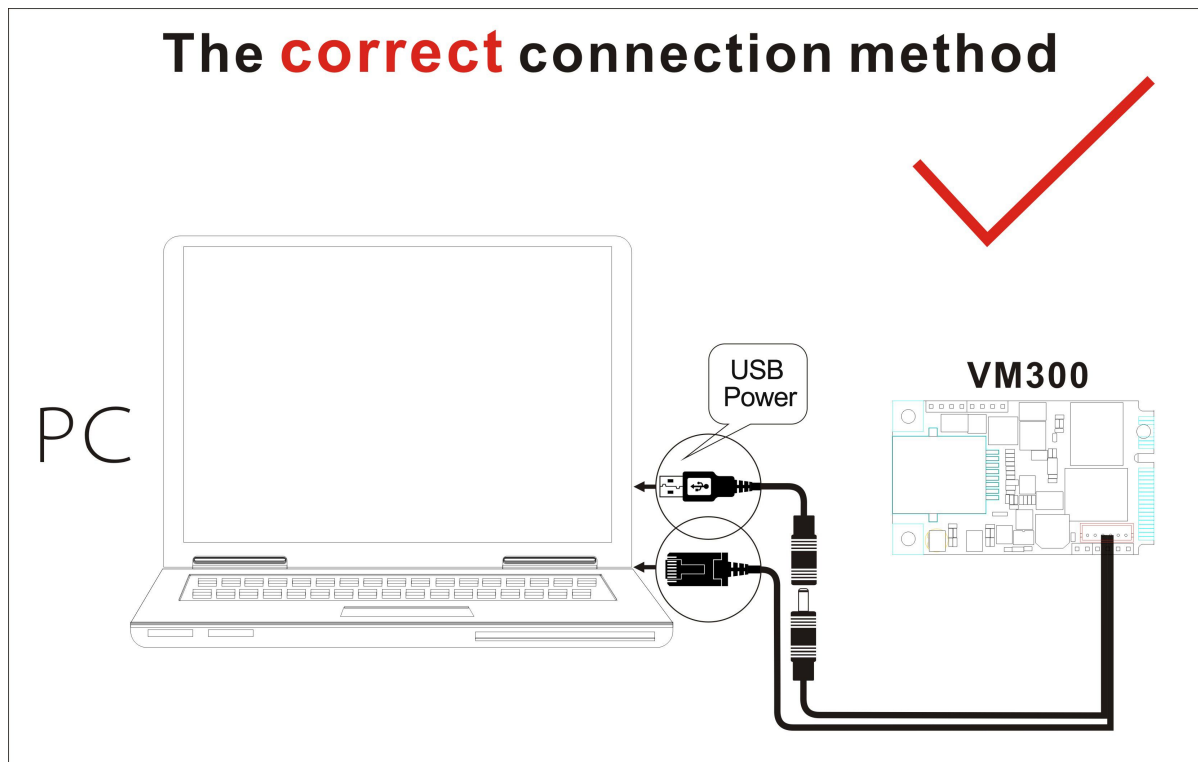
All rights reserved, with retained ownership

Without Shenzhen HouTian Network Communication Technology Co., Ltd written authorization, any company or personal can't copy, writer or translation part or all contents. Can't do commodity distribution for any commercial or profitable purposes by any ways (electricity, mechanical, photoprint, record or other methods).

VONETS is the registered trademark of Shenzhen HouTian Network Communication Technology Co., Ltd. The other all trademarks or registered trademarks mentioned in this documents are belong to the individual owners. The product specifications and information technology mentioned in this manual are just for reference, if any updates, without other notice. Except for special agreements, this manual is just for user guidance, any statements, information and so on in this manual can't constitute the warranty of any forms.

Chapter 1 Quick Setting Guide of Bridge Mode

1. Connect to computer



Set IP address of the computer to automatically, please see the words in the red circle of the following picture:



2. Open the IE browser, enter http://vonets.cfg virtual domain name setting (VDNS).

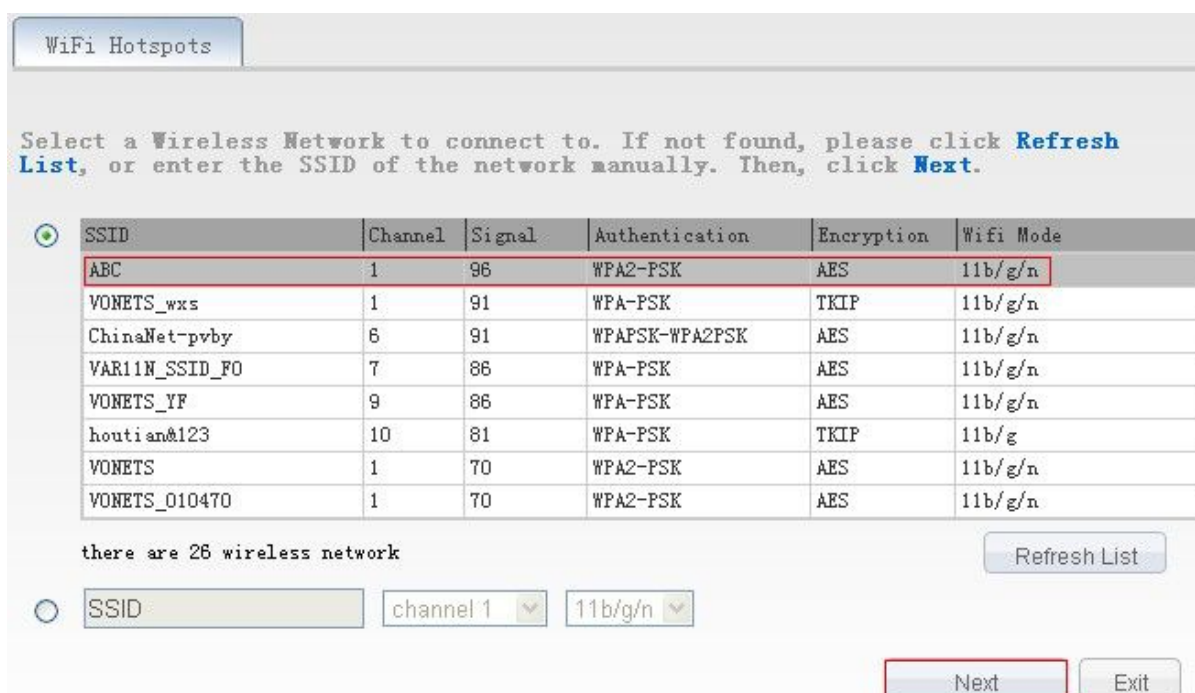


Remark:

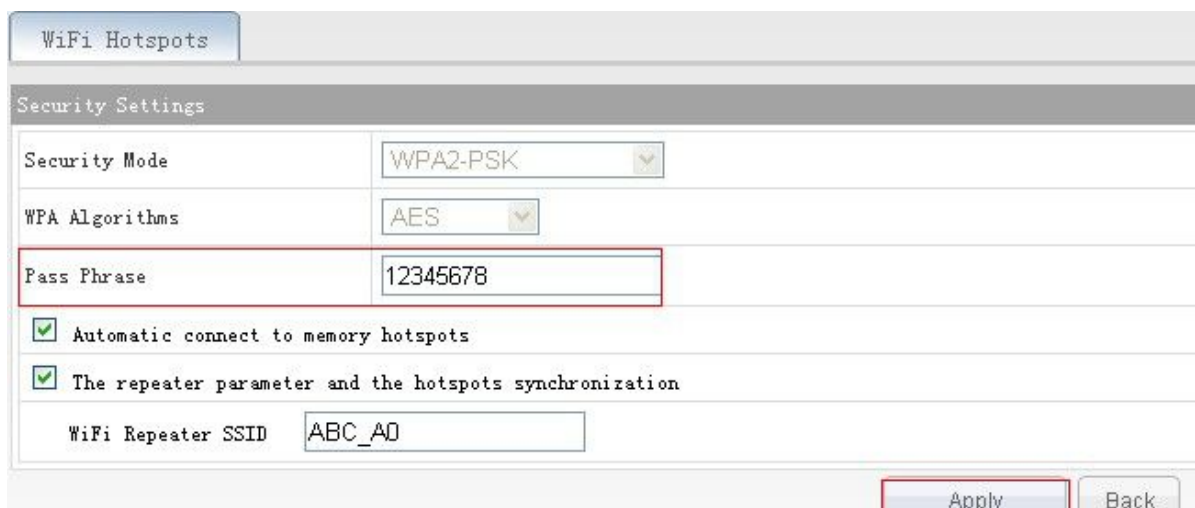
Enter domain name, then Enter, the login page will appear, the default admin and password is admin.

3. Scan Hotspots

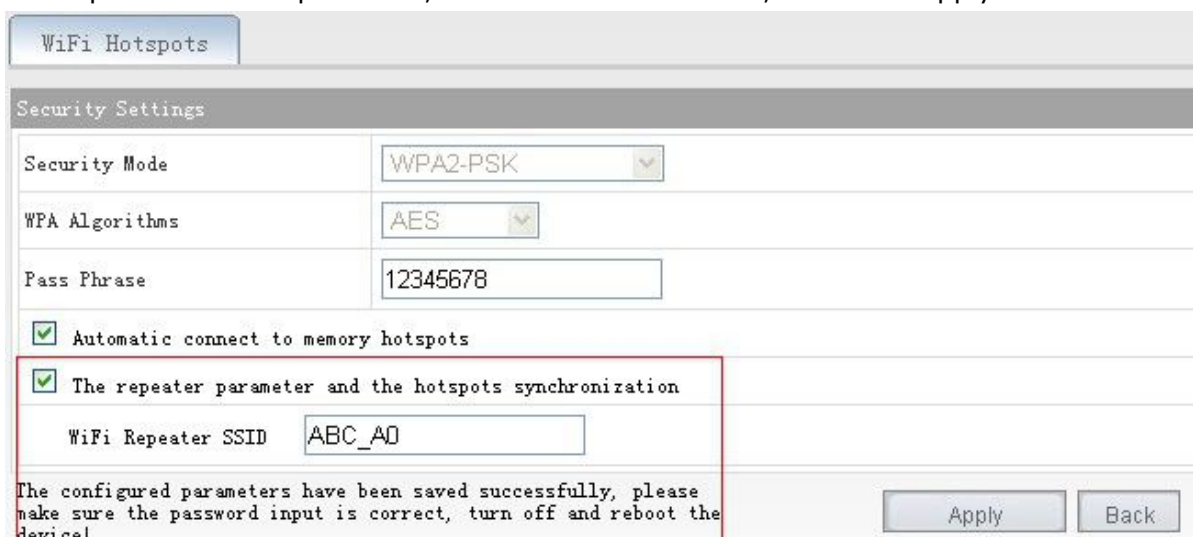
After entering the IE browser, the WiFi hotspots window will appear, can search the WIFI hotspots signal that opened SSID broadcast around, please see the following:



➤ Choose a correct WiFi signal, then click Next, the following interface will appear:



- Input the correct password, confirm it is correct one, then click Apply button.



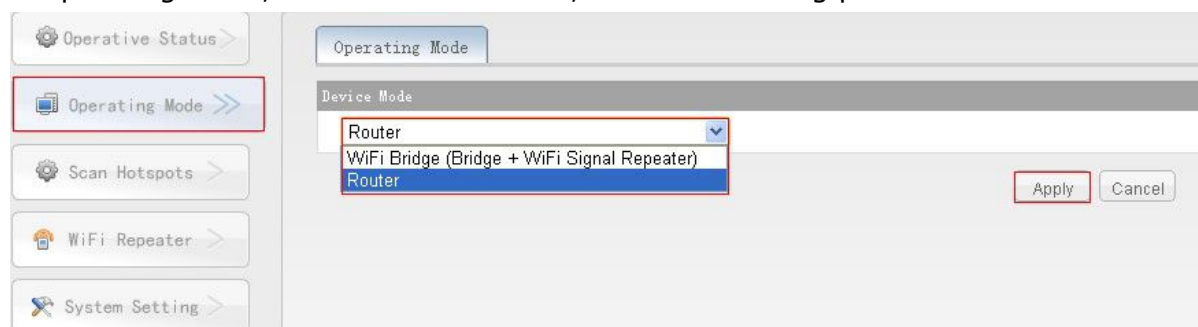
- Click Apply button, the above interface will appear, the configured parameters have been saved successfully, please make sure the password input is correct, turn off and reboot the device.

Remark: After configured successfully, the WiFi name of the device is the source hotspot's name add _the last two characters of the MAC of the product, the password is the same as the source hotspot's parameters, users can go to WiFi Repeater menu to change SSID and password.

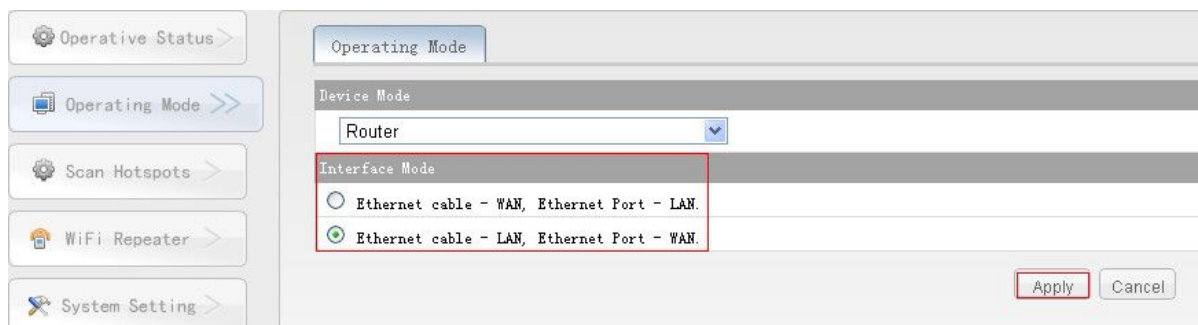
Chapter 2 Quick Setting Guide of Router Mode

1. Operating Mode

Click Operating Mode, choose Router mode, see the following picture:

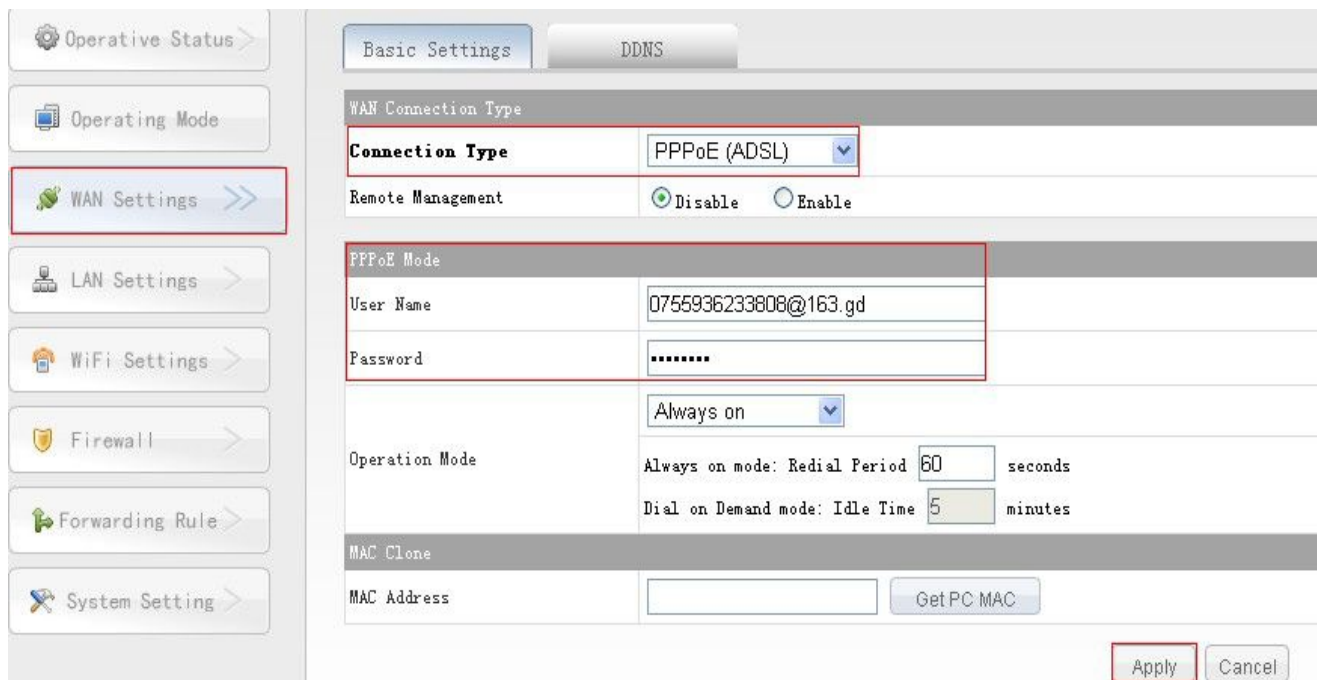


Choose Router Mode can switch LAN, WAN port to fit for different environments connected to Modem, the default is the ethernet cable is LAN port, RJ45 ethernet port is LAN port, see the following pictures:



2. WAN Port settings

Click WAN settings button, choose the correct connection Type, enter the User name and Password provided by ISP, click Apply, then ok, see the following picture:



If you have any questions, please visit the Tech Article column of www.vonets.com, look at the article 《Home Wireless Router Application》.

The download link of VM300 datasheet:

<http://www.vonets.com/download/VM300/VM300—Datasheet.pdf>

The download link of VM150 datasheet:

<http://www.vonets.com/download/VM150/VM150—Datasheet.pdf>

Shenzhen Houtian Network Communication Technology Co., Ltd

<http://www.vonets.com>